

WHEEL LOADER
HL975
HL975XT

Operating weight: 26500 kg
Engine Power: 250 kW (335 HP) / 2100 rpm
Bucket capacity: 4.80 m³ - 5.20 m³



READY TO CHANGE YOUR WORLD

With its powerful 250 kW Cummins X12 Stage V engine delivering an impressive 335 HP, the **Hyundai HL975 wheeled loader** is fully equipped to change your world. A 5-speed transmission with lockup torque converter transmits that power to the ground, while a 4,8 m³ bucket capacity enables it to handle many tonnes per hour. The HL975 also has tailored technologies and precise operating systems that offer unbeatable comfort, control and safety. With a reinforced exterior for added durability and quick and easy maintenance for maximum uptime, you'll get a reliable return on your investment.



Productivity & Efficiency

TAILORED TECHNOLOGIES FOR BETTER PRODUCTIVITY

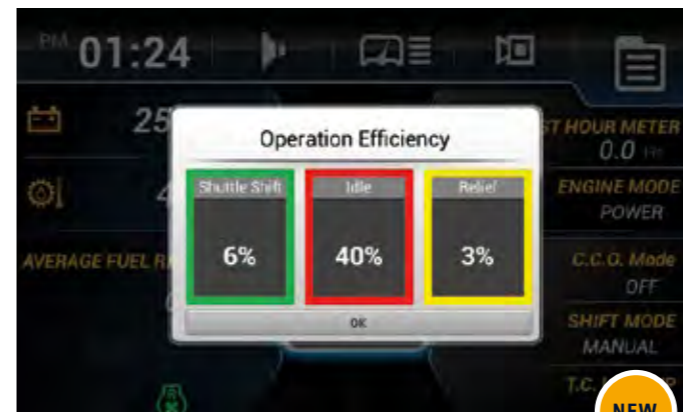
Powered by a reliable, responsive Cummins X12 engine, the HL975 delivers immense power to handle heavy-duty work in extreme conditions. Its strong performance is matched by a range of technologies that enhance fuel efficiency while keeping harmful emissions to a minimum.

To help you get the most out of this mighty machine, the engine's power is matched by precise operating systems, including Hyundai's proprietary weight system technology and load-sensing hydraulics as standard. Additional control, monitoring and maintenance features help you to optimise performance and productivity every single day, on any worksite.



Engine

The Cummins X12 engine meets European Stage V emissions requirements and is designed for maximum productivity and fuel savings. This HL975 features our all-in-one exhaust aftertreatment system which cuts emissions and operating costs. By removing the need for EGR, this also enhances reliability and simplifies maintenance.



NEW

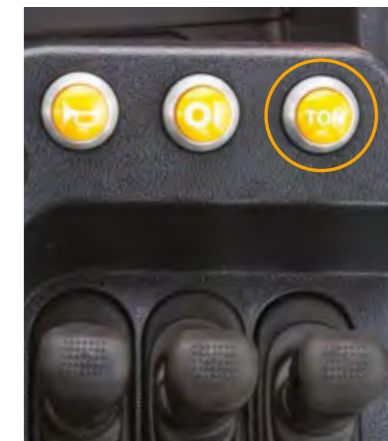
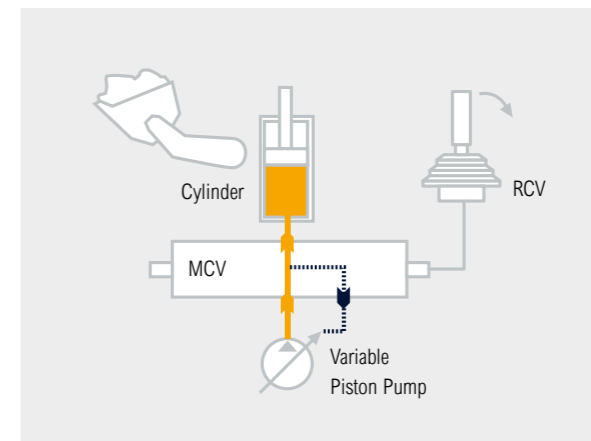
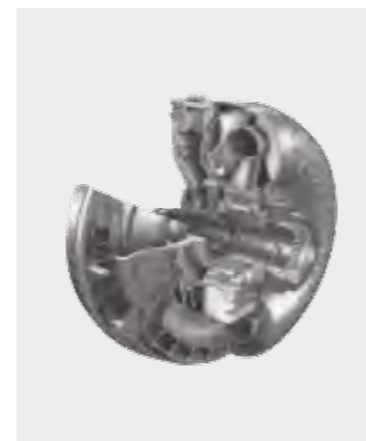
Eco Report

The Eco Report feature makes it easy for operators to work more efficiently by displaying real-time information about machine performance.



Electro-hydraulic control system

The electro-hydraulic control system improves handling precision and comfort, giving you effortless control in any working conditions.



Five-speed lockup clutch

The HL975 is equipped with a five-speed transmission and a lockup clutch, allowing you to work more efficiently while keeping fuel consumption and emissions low.

Load-sensing hydraulics

Load-sensing hydraulics enable precise operation and more efficient piston pump control. By keeping oil pressure and flow discharge to a minimum, the system improves fuel economy.

Weighing system

Accurate to approximately 1%, Hyundai's weighing system helps you to manage production more efficiently in any environment. The system has automatic and manual settings for monitoring individual and cumulative bucket load weights. Measurements are displayed on the multi-function screen in the cab.

Automatic engine shutdown

The engine shuts down automatically when the machine is at rest to cut fuel consumption and prevent unnecessary emissions. Different operating modes and idling times can be selected according to the work environment, further enhancing efficiency.

Smart Power mode

The new Smart Power mode adjusts engine RPM in heavy load work like digging, to save fuel without compromising on performance. The technology also achieves an optimal balance between traction and breakout forces.

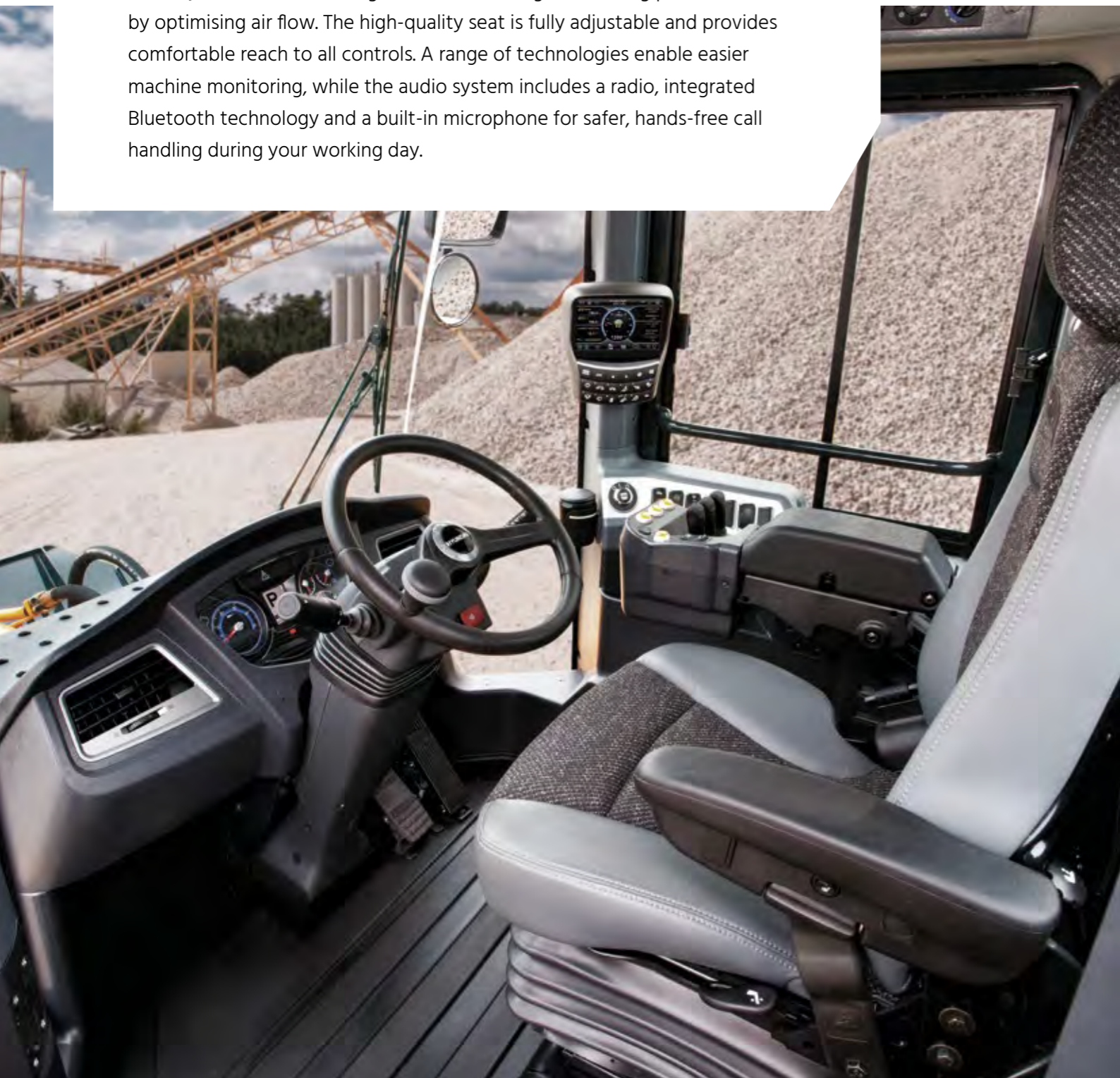


NEW

Operator Comfort

A CABIN DESIGNED AROUND YOU

The HL975 cabin has everything you need for a productive, stress-free working environment. Comfortable and spacious, it features state-of-the-art noise reduction technology for a sound level of only 73 dB, one of the lowest in the industry. The air conditioning maximises heating and cooling performance by optimising air flow. The high-quality seat is fully adjustable and provides comfortable reach to all controls. A range of technologies enable easier machine monitoring, while the audio system includes a radio, integrated Bluetooth technology and a built-in microphone for safer, hands-free call handling during your working day.



Adjustable seat and armrest

The HL975 has a large, comfortable seat with a headrest. The armrest and controller are mounted to the seat so that they move with you as you work, improving comfort and reducing fatigue. Thanks to the electro-hydraulic implement control lever, less force is needed to operate attachments, helping you to work longer and more productively.

Touchscreen monitor

The instrument panel is optimised to provide quick and easy access to accurate equipment data. It features a seven-inch touchscreen monitor for excellent visibility and an audio AUX function for added convenience.



Soft end stop

The soft end stop function reduces the hydraulic speed of the cylinder as it reaches the end of its stroke. This lessens the shock load of the stroke for increased operating comfort and better material retention.

Miracast Wi-Fi connection to smartphone

The Miracast system based on the operator's smartphone Wi-Fi allows the use of various smartphone features on the screen, including navigation, web surfing and music and video playback.



Instrument cluster

All the indicators displaying machine status are centralised in one cluster to enable easy, efficient control.

Eco Gauge

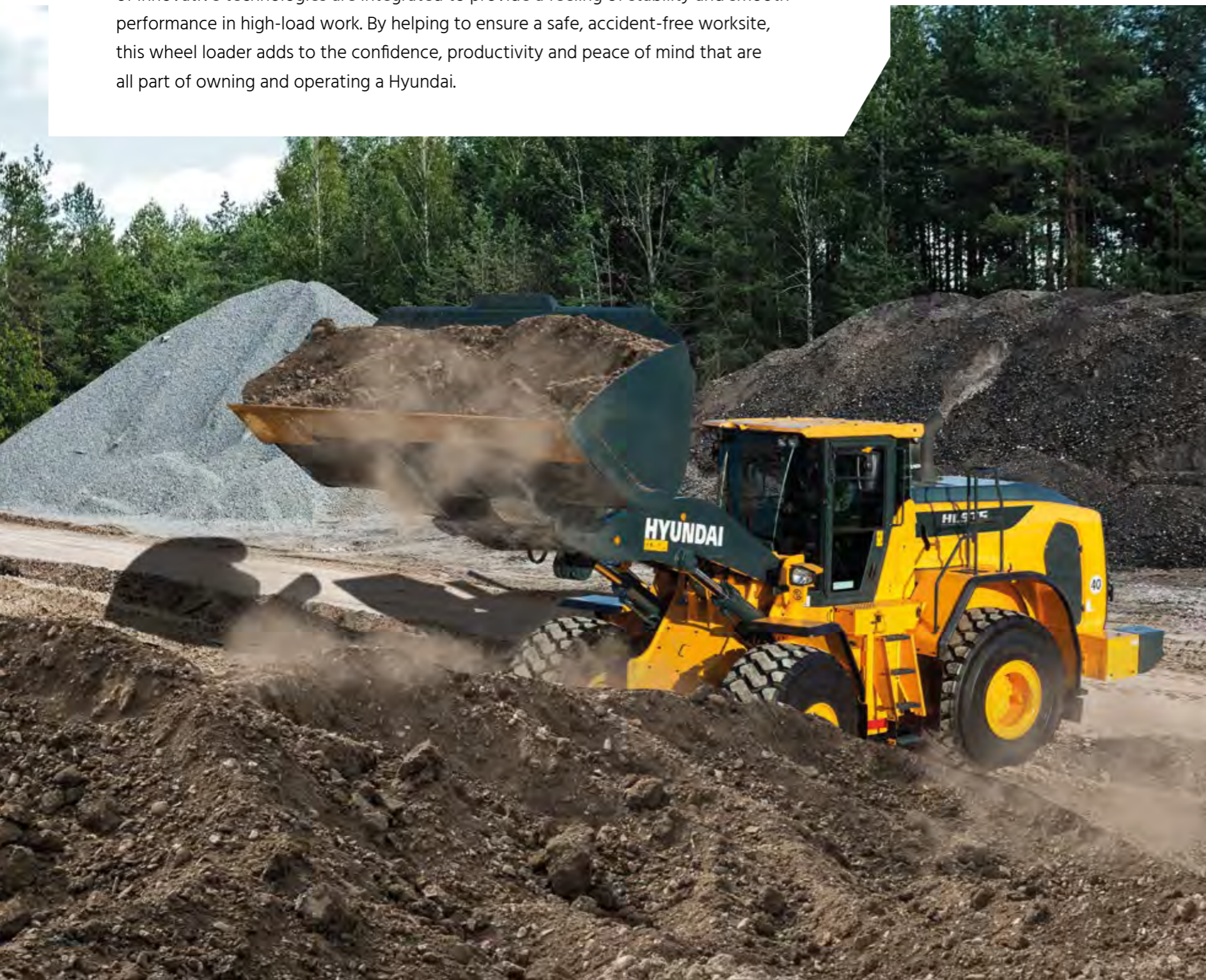
The Eco Gauge allows you to view engine torque and fuel efficiency as you work. You can also review historical data on average, hourly and daily fuel consumption to help you work more economically.



Safety

PROTECTION FOR YOU AND YOUR EQUIPMENT

Details can make a huge difference when it comes to safety, especially when you're working in rough conditions. It's not just a matter of complying with rules. The HL975's safety features are designed and tested to meet your needs in the real world. A range of innovative technologies are integrated to provide a feeling of stability and smooth performance in high-load work. By helping to ensure a safe, accident-free worksite, this wheel loader adds to the confidence, productivity and peace of mind that are all part of owning and operating a Hyundai.



LED lights
 LED lights can be mounted as an option on the front and rear work lights, headlight, beacon light and rear combi-light. LED lights allow you to see further (66% longer range), have a better service life (approximately 40 times longer) and reduce energy consumption by 70% compared to halogen lighting.



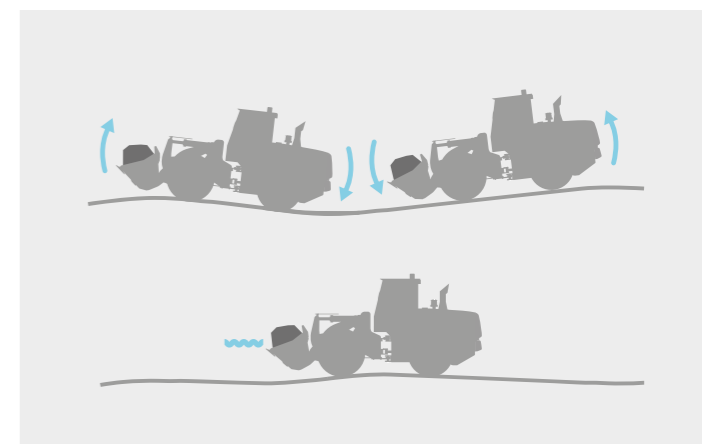
Advanced Around View Monitoring (AAVM) and Intelligent Moving Object Detection (IMOD)
 The optional Advanced Around View Monitoring (AAVM) system gives you a 360° overview of your immediate working environment. It also includes Intelligent Moving Object Detection (IMOD) technology that senses and warns you when people or objects come within five metres of the machine.



Seat belt warning alarm
 Operators are reminded to fasten their safety belt by an audible and visible alarm.



Ride control system
 A ride control system with a piston accumulator reduces pitching of the wheel loader body and bucket for more stable and comfortable operation. It also minimises spillage, adding to convenience and productivity.



Durability

UPTIME PROTECTION FOR A SUSTAINABLE RETURN ON YOUR INVESTMENT

To protect your business, you need to know that the investment you make today will sustain your profits over the long term. That's why we prioritised reliability throughout the development of the HL975, from design and manufacturing to quality control. The frame and bucket are built for maximum strength, while all operating systems have been optimised for endurance and tested rigorously on a range of work sites. The result is a tough, durable workhorse that minimises downtime for repairs and maintenance and helps you to protect your profits.



◀ **Aftertreatment structure**
The durable aftertreatment structure is protected by a robust support and shock absorbing system. This prevents failure due to shock and vibrations during operation.



◀ **Hydraulic differential lock**
A hydraulic locking differential prevents tyre slip for more secure operation, improved productivity and greater fuel economy.

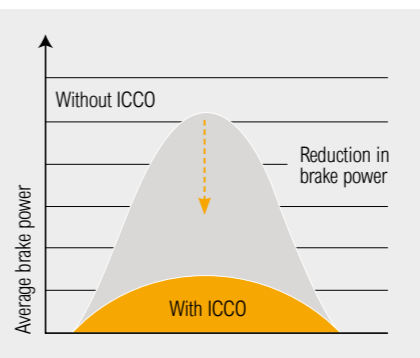


▶ **Hydraulic hoses**
High-grade hoses with outstanding resistance to heat and pressure provide maximum durability, even in tough working conditions.

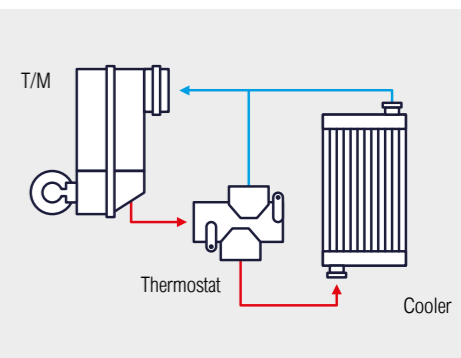
▶ **Toughened steel**
Steel with extra wear resistance has been used in key areas of the bucket to deliver long, reliable service.



▶ **Intelligent Clutch Cut-Off (ICCO)**
This function minimises loss of power in the torque converter and prevents excessive power use during braking. This reduces heat generation and wear on the brake disc.



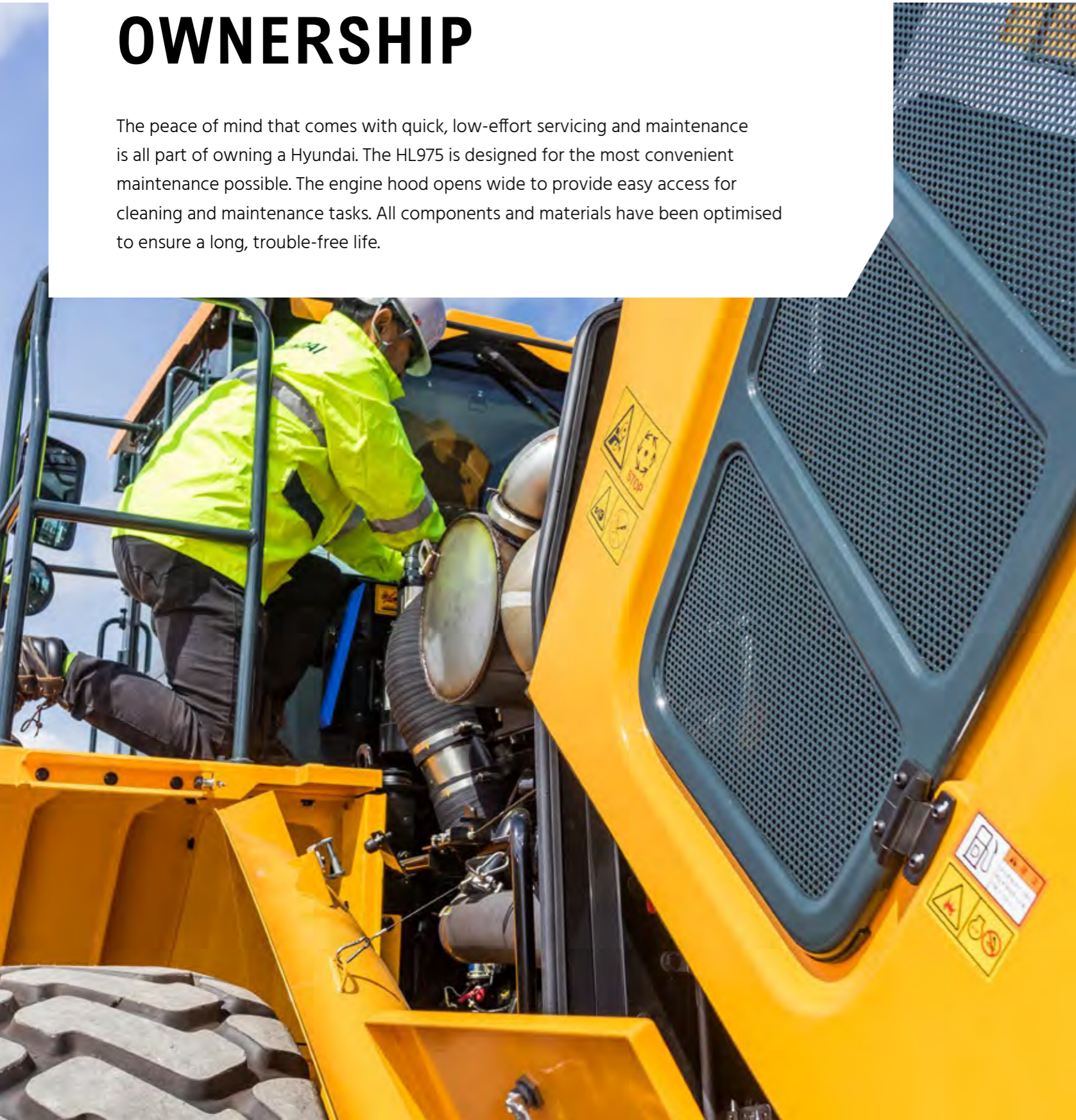

▶ **Thermostat for transmission cooling**
The HL975 is equipped with a thermostat for transmission cooling. This feature ensures that the fluid warms up quickly and always stays at the optimal temperature, protecting components and increasing efficiency.




Serviceability

EASY SERVICING FOR TROUBLE-FREE OWNERSHIP


The peace of mind that comes with quick, low-effort servicing and maintenance is all part of owning a Hyundai. The HL975 is designed for the most convenient maintenance possible. The engine hood opens wide to provide easy access for cleaning and maintenance tasks. All components and materials have been optimised to ensure a long, trouble-free life.

Increase productivity
By providing information such as service hours, idle time and fuel consumption, Hi MATE saves you money and improves productivity. Service alerts enable better maintenance planning.



Monitor your machines
Hi MATE's real-time location information allows better, more convenient monitoring of your equipment. Just log onto the Hi MATE website or mobile app to see your machines at any time, from any location. Receive data online, by e-mail or directly on your mobile device.

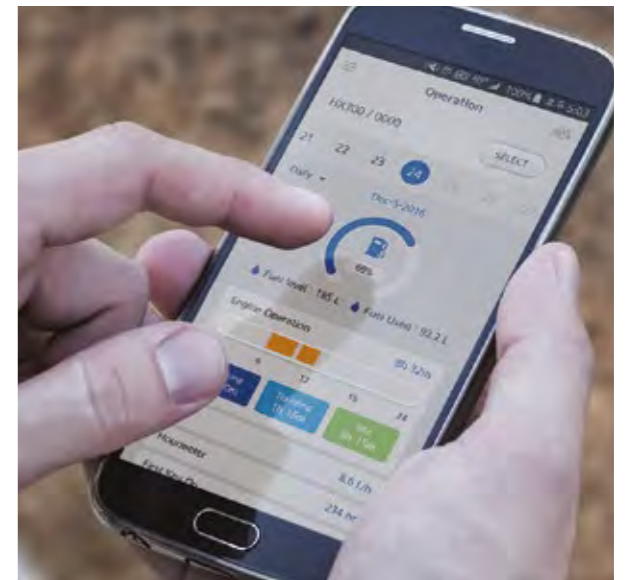


Improve security
Protect your equipment from theft or unauthorised usage. Hi MATE's geofencing alerts notify you automatically when a machine leaves a predetermined zone.

HiMATE

Boost efficiency and performance

For maximum convenience and security, the HL975 features Hyundai's exclusive Hi MATE remote fleet management system, which uses mobile data technology to provide the highest level of service and support. You can monitor your equipment wherever you are via a dedicated website or mobile app, with access to working parameters like total engine hours, machine utilisation, actual performed working hours, fuel consumption and machine location.



◀ **Durable cooling system**
The HL975 has a dependable wide-fin air cooler that prevents performance degradation caused by contamination. It is also equipped with a reversible fan to eliminate dust and debris.

Parts & Warranties

HYUNDAI GENUINE PARTS AND WARRANTIES: THE BEST WAY TO PROTECT YOUR INVESTMENT

Hyundai Genuine Parts, accessories and warranty programmes are specially designed to keep your machine covered. They increase uptime and maintain the performance, comfort, and efficiency that are built into your equipment.



A network you can rely on

Hyundai Construction Equipment Europe prioritises quick, reliable intervention to keep your equipment running smoothly. In its 13000 m² warehouse, Hyundai covers over 96% of all Genuine Parts. With one of Europe's most advanced automated warehousing systems, we are able to maintain availability and efficient delivery of all our Genuine Parts, guaranteeing a 24-hour delivery service across our European dealer network.



Fuel filters

Hyundai fuel filters provide the right degree of filtration to keep your engine clean. They are designed to meet and exceed the engine manufacturer's prerequisites for water separation and dirt filtration, prolonging the life of your engine.



Hyundai Genuine Parts

Hyundai Genuine Parts have the same design as those installed when your machine left the factory. They are subjected to rigorous quality inspections and tests to make sure they meet Hyundai's strict requirements for quality and durability. As well as minimising downtime, this helps to ensure peak performance on every task.



Aftersales kits

You can order Hyundai aftersales kits via your dealer. This AAVM system for example, improves safety in and around your work environment at all times.



Hyundai warranties

Our warranties are designed to give you the cover you need to build your business with confidence and peace of mind.

Standard warranties

We offer standard warranty coverages for all wheel loaders. Optional and extended warranty periods are also available, so you can benefit from full warranty coverage for longer, and even over the full lifetime of the machine.

Extended warranties

Our extended warranties help you maintain full control over your operating costs. If you combine an extended warranty programme with a tailored maintenance contract, you can completely avoid unexpected costs. Please discuss the optimal solution for your needs with your local Hyundai dealer.

Walk-around

HL975

Productivity & Efficiency

- Electro hydraulic control
- Load sensing system
- Accurate weighing system
- Smart Power Mode
- ZF 5-speed transmission with lock up clutch
- Intelligent clutch cut-off (ICCO)

NEW

Durability

- Premium quality ZF axles
- Sinter brake discs
- Axle oil cooling
- Thermostat-based transmission cooling
- Completely sealed engine room
- High grade hoses

OPTION

**Operator Comfort**

- Spacious cabin
- 7" Touchscreen monitor
- Ride control system
- Air suspension seat with heater
- Fully adjustable armrests
- Joystick steering
- Fingertip control

OPTION

OPTION

Serviceability

- Fully openable engine hood
- Extended service intervals
- Hi-MATE
- Vertically stacked coolers
- Reversible fan
- ECD (Engine Connected Diagnostics)
- Easy filter replacement
- Auto greasing system

NEW

OPTION

Safety

- Seat belt warning alarm
- AAVM camera system
- IMOD (Intelligent Moving Object Detection)
- Large, slip resistant steps and handrails
- Heated mirrors

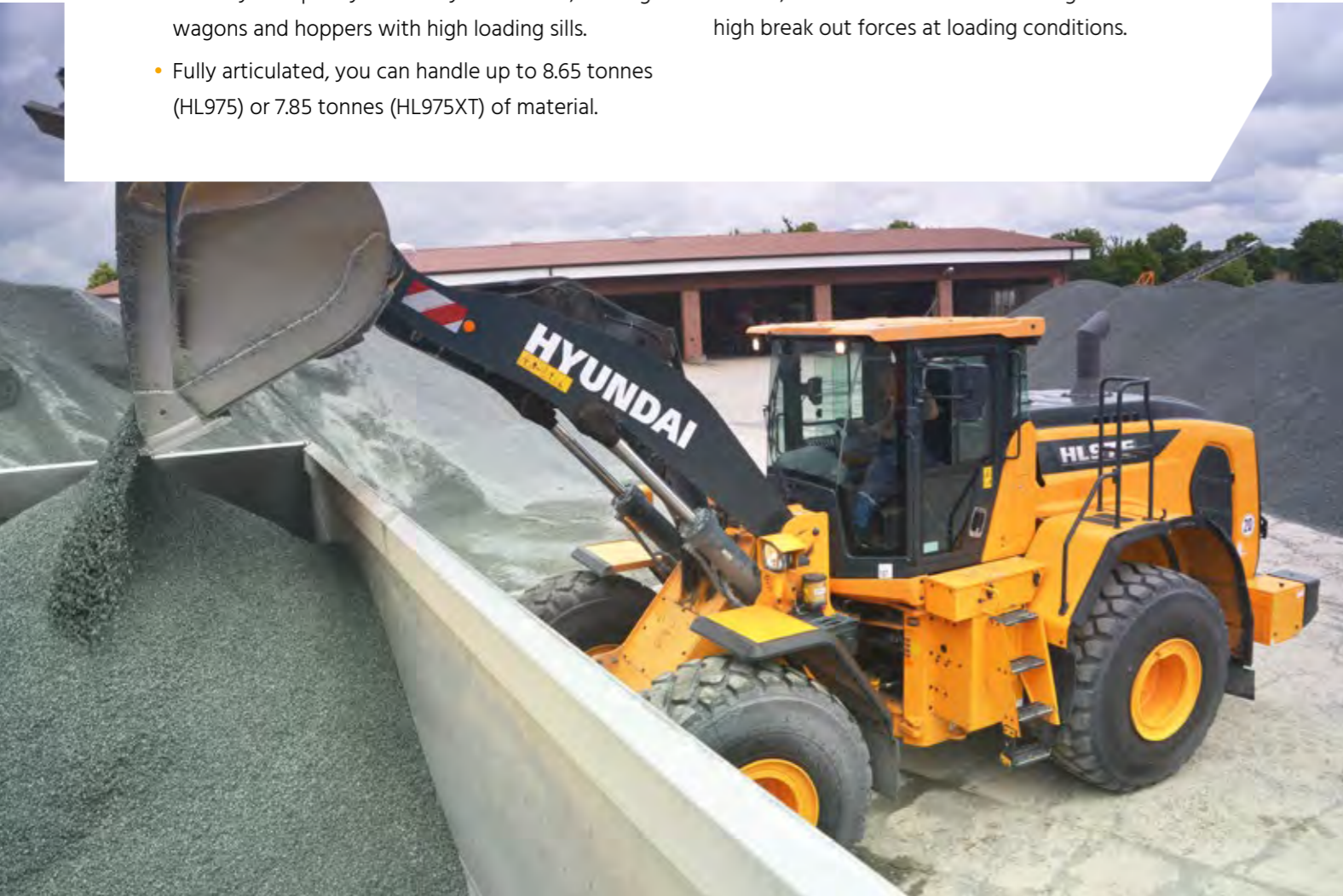
OPTION

OPTION

TWO DIFFERENT BOOM LENGTHS

The HL975 can be equipped with a standard boom (HL975) or a high-lift boom (HL975XT) to suit all requirements.

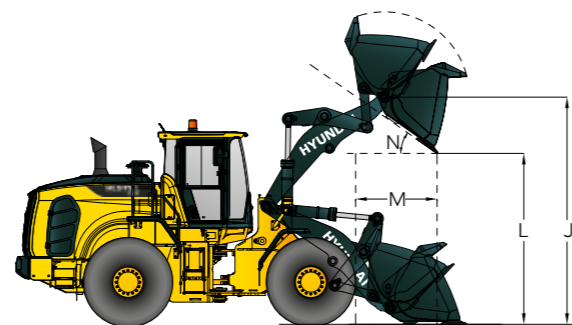
- Get an impressive bucket pivot point of over 4.42 m (HL975) or 4.79 m (HL975XT).
- With bucket pivot point heights of up to 4.79 m you'll quickly and easily load trucks, loading wagons and hoppers with high loading sills.
- Fully articulated, you can handle up to 8.65 tonnes (HL975) or 7.85 tonnes (HL975XT) of material.
- The high-lift boom enables you to work with an earthmoving bucket to a maximum dump clearance at 45° discharge of 3.49 m.
- Robust, low-maintenance Z-bar linkage offers high break out forces at loading conditions.



HL975XT

With Z-bar linkage and high lift boom.

- J** Hinge pin height at maximum lift (HL975XT: 4790 mm)
- L** Dump clearance at maximum lift and 45° discharge (HL975XT: 3485 mm)
- M** Reach at maximum lift and 45° discharge (HL975XT: 1420 mm)
- N** Dump angle at maximum lift and dump on stops (HL975XT: 48 °)



SPECIFICATIONS

ENGINE	
Engine / Model	Cummins X12 EU STAGE V Aftertreatment technology DOC / DPF / SCR
Gross Power (SAE J1995)	250 kW (335 HP) at 2100 rpm
Net Power (SAE J1349)	247 kW (331 HP) at 2100 rpm
Max. Power	284 kW (381 HP) at 1700 rpm
Peak Gross Torque (SAE J1995)	1765 Nm at 1400 rpm
Net Torque (SAE J1349)	1746 Nm at 1400 rpm
Bore	132 mm
Stroke	144 mm
Displacement	11.8 l

·The indicated net power is available for the flywheel when the engine is equipped with a fan, alternator, air cleaner, and after-treatment device.
·The indicated gross power is obtained with the fan at maximum speed.

TRANSMISSION			
Manufacturer / Model		ZF / 5WG290	
Travel speed		4 speed T/M	5 speed T/M with lockup clutch
		km/h	km/h
Forward	1st	6.6	6.5
	2nd	11	11
	3rd	24.6	17.6
	4th	36.5	25.2
	5th	-	40
Reverse	1st	6.6	6.5
	2nd	11	11
	3rd	24.6	25.2

This is the maximum travel speed of a standard machine with unfilled bucket.

AXLES		
Front		
Manufacturer / Model	ZF / MT-L3115II	Fixed
Rear		
Manufacturer / Model	ZF / MT-L3105II	Oscillating ± 11 degrees

OVERVIEW			
Description	UNIT	HL975	HL975XT
Operating weight	kg	26500	27295
Bucket capacity	Heaped	m³	4.8
	Struck	m³	4.1
Breakout force-bucket	kN	230	228
	kgf	23435	23295
Tipping load	Straight	kg	20000
	Full turn	kg	17300

TYRES	
Type	Tubeless, loader design tyres
Standard	26.5 R25, L3
Options include	26.5 R25, XHA2

BRAKES	
Service Brakes	Hydraulically actuated, wet disc brakes actuate all 4 wheels, independent axle-by-axle system. Self adjusting & wheel speed brake.
Parking Brake	Spring applied, hydraulic released brake
Emergency Brake	When brake oil pressure drops, indicator light alerts operator and parking brake automatically applies.

HYDRAULIC SYSTEM		
Manufacturer pump / MCV	Bosch Rexroth	
Implement pump type	Load sensing hydraulic system	
Maximum pump output	353 l/min	
Maximum Operating Pressure	280 bar	
Hydraulic Cycle Time with Rated Payload	Raise from Carry Position	5.9 Sec.
	Dump, at Maximum Raise	1.7 Sec.
	Lower, Empty, Float Down	3.9 Sec.
	Total	11.5 Sec.
Cylinder	Type : Double acting	
	No. of cylinders-bore x stroke:	
	Lift	2-170 x 795 mm
	HL975 Tilt	1-190 x 565 mm
	HL975XT Tilt	1-190 x 585 mm

STEERING SYSTEM	
Manufacturer steering unit / valve	Danfoss
Type	Load sensing hydrostatic articulated steering
Pump	Variable displacement piston pump, 211 l/min
System Pressure	210 bar
Cylinder	Double acting 2-100 x 468 mm
Steering Angle	40° to both right and left angle, respectively

SERVICE REFILL CAPACITIES	
UNIT	l
Fuel tank	400
DEF tank	56.8
Cooling system	46.0
Crankcase	34.0
Transmission	55.0
Front axle	62.0
Rear axle	42.0
Hydraulic tank	151
Hydraulic system (including tank)	285

CABIN	
ROPS / FOPS meet ISO 3471 and ISO 3449 Level II standards	

SOUND	
Guaranteed Noise Level presented below can be differed depending on a range of factors such as operating condition, speed of a cooling fan, types of engine and so forth. Hearing protection shall be necessary if an operator is working in the improperly maintained cabin or exposed to a noisy environment by leaving doors and/or windows open.	
With Cooling Fan Speed at Maximum Value:	
Operator Sound Pressure Level (ISO 6396:2008)	73 dB(A)
Exterior Sound Power Level (ISO 6395:2008)	108 dB(A)

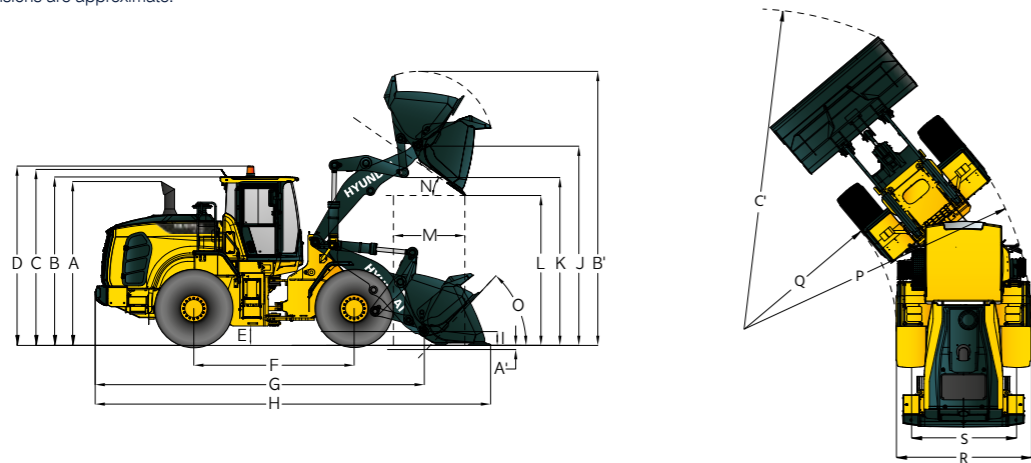
* Distance of 15 m, moving forward in second gear ratio.

AIR CONDITIONING SYSTEM	
The air conditioning system contains fluorinated greenhouse gas refrigerant R134a (Global Warming Potential = 1430). The system contains 0.75 kg of refrigerant representing a CO ₂ equivalent of 1.07 metric tonnes.	

DIMENSIONS

DIMENSIONS

All dimensions are approximate.



Description	HL975	HL975XT
	mm	mm
A. Height to Top of Exhaust Pipe	3515	3515
B. Height to Top of Cabin	3590	3590
C. Height to Top of Product Link Antenna	3990	3990
D. Height to Top of Warning Beacon	3720	3720
E. Ground Clearance	460	460
F. Wheelbase	3550	3550
G. Overall Length (without bucket)	7780	8215
H. Shipping Length (with bucket level on ground)	9205	9640
I. Hinge Pin Height at Carry Position	520	635
J. Hinge Pin Height at Maximum Lift	4425	4790
K. Lift Arm Clearance at Maximum Lift	3755	4105
L. Dump Clearance at Maximum Lift and 45° Discharge	3120	3485
M. Reach at Maximum Lift and 45° Discharge	1335	1420
N. Dump Angle at Maximum Lift and Dump (on stops)	48	48
O. Roll Back Angle	Ground	43
	Carry	48
P. Clearance Circle (diameter) to Outside of Tires	13510	13510
Q. Clearance Circle (diameter) to Inside of Tires	7395	7395
R. Width over Tires (unloaded)	2980	2980
S. Tread Width	2300	2300

*A', B', C' are indicated on the next page

OPERATING SPECIFICATIONS WITH BUCKETS

OPERATING SPECIFICATIONS WITH BUCKETS									
Linkage	Standard Linkage								High Lift Linkage
	General Purpose - Pin On						General Purpose - Hook On		
Bucket Type	General Purpose - Pin On						General Purpose - Hook On		High Lift Linkage
Edge Type	Bolt-On Cutting Edges		1 Piece Tooth		2 Piece Tooth		Bolt-On Cutting Edges		
Capacity - Rated	m³	4.80	5.20	4.60	5.00	4.60	5.00	4.80	-
Capacity - Rated at 110% Fill Factor	m³	5.28	5.72	5.06	5.50	5.06	5.50	5.28	-
Width	mm	3250	3250	3300	3300	3320	3320	3250	-
Dump Clearance at Maximum Lift and 45° Discharge	mm	3120	3075	2995	2950	2960	2915	2910	+365
Reach at Maximum Lift and 45° Discharge	mm	1335	1385	1420	1470	1445	1495	1540	+85
A' Digging Depth	mm	100	100	125	125	135	135	100	+40
Shipping Length (with Bucket)	mm	9205	9270	9355	9420	9400	9465	9500	+435
B' Overall Height with Bucket at Maximum Lift	mm	6090	6225	6090	6225	6090	6225	6290	+365
C' Loader Clearance Circle with Bucket at Carry Position	mm	14730	14780	14880	14930	14930	14980	14900	+370
Static Tipping Load, Straight (No Tire Deflection)	kg	20000	19755	20290	20045	20290	20045	18200	-1700
Static Tipping Load, Articulated (No Tire Deflection)	kg	17300	17090	17550	17340	17550	17340	15800	-1600
Breakout force	kN	230	223	242	231	242	231	190	-1.4
	kgf	23435	22425	24725	23590	24725	23590	19450	-145
Operating Weight*	kg	26500	26625	26395	26520	26395	26520	27115	+795

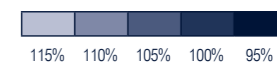
All height and tyre related dimensions are with standard 26.5 R25, L3 tyres

DENSITY OF OPERATING MATERIALS

		Material Density [ton/m³]
Earth/Clay		1.5 ~ 1.7
Sand and Gravel		1.5 ~ 1.7
Aggregate	25 ~ 76 mm	1.6 ~ 1.7
	19 mm and larger	1.8

HL975 BUCKET SELECTION CHART

Lift arm	Bucket	Type	m³	Material Density [ton/m³]																
				0.8	0.9	1.0	1.1	1.2	1.3	1.4	1.5	1.6	1.7	1.8	1.9	2.0	2.1	2.2	2.3	2.4
Standard lift arm	General Purpose	Cutting edge	4.8	5.5 m³										4.6 m³						
		Cutting edge	5.2	6.0 m³						4.9 m³										
		1-Bolt on tooth	4.6	5.3 m³										4.4 m³						
		1-Bolt on tooth	5.0	5.8 m³						4.8 m³										
		2-Bolt on tooth	4.6	5.3 m³										4.4 m³						
		2-Bolt on tooth	5.0	5.8 m³						4.8 m³										
		Cutting edge, QC	4.8	5.5 m³						4.6 m³										
High lift arm (XT)	General Purpose	Cutting edge	4.8	5.5 m³										4.6 m³						
		Cutting edge	5.2	6.0 m³						4.9 m³										
		1-Bolt on tooth	4.6	5.3 m³										4.4 m³						
		1-Bolt on tooth	5.0	5.8 m³						4.8 m³										
		2-Bolt on tooth	4.6	5.3 m³										4.4 m³						
		2-Bolt on tooth	5.0	5.8 m³						4.8 m³										
		Cutting edge, QC	4.8	5.5 m³						4.6 m³										



STANDARD/OPTIONAL EQUIPMENT

CABIN & INTERIOR	HL975	HL975XT
ALARMS, AUDIBLE AND VISUAL		
Central warning lamp	●	●
Engine coolant temperature	●	●
Transmission oil temperature	●	●
Hydraulic oil temperature	●	●
Fuel level	●	●
Transmission error	●	●
Air filter clogging	●	●
Engine oil pressure	●	●
Battery voltage	●	●
Brake oil pressure	●	●
Engine stop	●	●
Engine coolant level	●	●
INDICATOR LIGHTS		
Torque converter lock up	●	●
Parking brake	●	●
High beam	●	●
Joystick steering	○	○
FNR	●	●
Differential Lock	●	●
Pilot cut off	●	●
Turning light	●	●
Seat belt ON/OFF	●	●
Engine auto stop	●	●
Clutch Cut Off	●	●
Ride control	●	●
LCD DISPLAY		
DEF level	●	●
DEF low level	●	●
Transmission gear range	●	●
Clock and fault code	●	●
Job time and distance	●	●
Operating hour counter	●	●
Engine rpm	●	●
GAUGES		
Engine coolant temperature	●	●
Fuel level	●	●
Transmission oil temperature	●	●
Speedometer	●	●
BATTERIES		
1315 CCA, 12 V, 2 pcs	●	●
LIGHTING SYSTEM		
LED interior cabin light	●	●
4 Turn signals	●	●
2 Stop and tail lights	●	●
2 Stop and tail lights (LED)	○	○
2 Head lights on front frame	●	●
2 Head lights (LED) on front frame	○	○
2 Working lights on front cabin roof	●	●
4 Working lights on front cabin roof	○	○
2 Working lights on rear cabin roof	○	○
4 Working lights (LED) on front cabin roof	○	○
2 Working lights (LED) on rear cabin roof	○	○
2 Working lights on rear grill	●	●
2 Working lights (LED) on rear grill	○	○
1 Beacon light (LED) detachable	○	○
IGNITION		
Standard Key	●	●
Smart key with start/stop button	○	○
SWITCHES		
Hazard	●	●
DPF	●	●
Engine hood open	●	●
Parking brake	●	●
Battery master switch	●	●
FNR shifter	●	●
Differential Lock foot switch	○	○
Emergency steering	●	●
Pilot cut off	●	●
Horn, electric	●	●

CABIN & INTERIOR	HL975	HL975XT
MEMBRANE SWITCHES IN MONITOR		
Main light	●	●
Work light	●	●
Auto grease	○	○
Quick coupler	○	○
Ride control	●	●
Weighing System	●	●
Beacon light	○	○
Rear wiper	●	●
Mirror heat	●	●
Auto position (boom / bucket)	●	●
Fine modulation	●	●
Rear view camera activation	●	●
CABIN (SOUND SUPPRESSED)		
ROPS / FOPS Cabin	●	●
Coat hook	●	●
Rear view mirror (1 Inside)	●	●
Rear view mirrors (2 Outside, heated)	●	●
Steering column, tilt and telescopic	●	●
Steering wheel with knob	●	●
Roller type sunshade (Front window)	●	●
Roller type sunshade (Rear window)	○	○
Tinted safety glass	●	●
1 cabin door (LH)	●	●
Magazine pocket	●	●
Radio / USB player with Bluetooth	●	●
Rubber floor mat	●	●
Wrist rest	●	●
24V to 12V DC converter (20A)	●	●
DOOR		
Door and cabin locks, standard key	●	●
Doors, service access (Locking)	●	●
Doors, service access (Remote opener)	●	●
AUTOMATIC CLIMATE CONTROL		
Air conditioner & heater	●	●
Defroster	●	●
Intermittent wiper and washer, front and rear	●	●
SEAT		
Air suspended, heated seat	●	●
Mechanical suspended, heated seat	○	○
PERSONAL STORAGE SPACE		
Console box	●	●
Holder, can and cup	●	●
PEDALS		
Single brake pedal	●	●
Dual-brake pedal	○	○
Accel pedal without ECO switch	●	●
Accel pedal with ECO switch	○	○

ENGINE	HL975	HL975XT
Alternator, 110A	●	●
Antifreeze	●	●
Fuel warmer	●	●
Fan guard	●	●
Rain cap, engine air intake	●	●
Coolant level sight gauge	●	●
Centrifugal air precleaner	○	○
Radiator wide core	●	●
ENGINE, CUMMINS, X12		
EU STAGE V / EPA TIER 4 FINAL	●	●
Engine fuel priming pump	●	●
Fuel / water separator	●	●
Engine oil level dipstick gauge	●	●
CLEAN EMISSION MODULE		
DOC, DPF, SCR	●	●

POWER TRAIN	HL975	HL975XT
TRANSMISSION ZF		
Torque converter	●	●
Transmission computer controlled, electronic soft shift, auto-shift and kick-down features included	●	●
Transmission F4 / R3	○	○
Transmission F5 / R3 with lock-up clutch	●	●
Transmission oil sight level	●	●
Transmission oil cooler with thermostat	●	●
Travel speed limiter (20-40 km/h)	●	●
BRAKE		
Service brake (Enclosed wet-disc)	●	●
Parking brake	●	●
FRONT AXLE ZF		
Hydraulic lock differential	●	●
Open differential	○	○
Limited Slip differential	○	○
REAR AXLE ZF		
Open differential	●	●
Limited Slip differential	○	○
Dual axle cooling system	○	○
TYRES		
26.5 R25, ★★, L3	●	●
26.5 R25, ★, XHA	○	○

HYDRAULIC SYSTEM	HL975	HL975XT
MCV 2 spools (boom / bucket)	●	●
MCV 3 spools (boom / bucket / aux)	○	○
Boom positioning system (automatic)	●	●
Bucket positioning system (automatic)	●	●
Diagnostic pressure taps	●	●
Hydraulic Oil Level Sight Gauge	●	●
EH Control (Joystick)	●	●
EH Control (Fingertip)	○	○
EH Joystick steering	○	○
Ride control system	●	●
Secondary steering system	●	●
Extra piping-for auxiliary function	○	○
Quick coupler piping	○	○
Auto Greasing	○	○
Hyundai Bio Hydraulic Oil (HBHO)	○	○

SAFETY	HL975	HL975XT
Boom safety bar	○	○
Emergency steering	●	●
OBJECT DETECTION		
IMOD (Intelligent Moving Object Detection)	○	○
AAVM (Advanced Around View Monitoring)	○	○
TELEMATICS		
Hi MATE	●	●
ECD (Engine Connected Diagnostics)	●	●

OTHERS	HL975	HL975XT
Articulation locking bar	●	●
Lift and tie-down hooks	●	●
Loader linkage, sealed	●	●
Z-kinematics	●	●
Extended Boom (Highlift)	-	●
ISO type quick coupler	○	○
Vandalism protection caplocks	●	●
Tool kit	○	○
BUCKET		
4.8 m³ Bucket, Cutting edge	○	○
5.2 m³ Bucket, Cutting edge	○	○
4.6 m³ Bucket 1 Piece Tooth	○	○
5.0 m³ Bucket 1 Piece Tooth	○	○
4.6 m³ Bucket 2 Piece Tooth	○	○
5.0 m³ Bucket 2 Piece Tooth	○	○
4.8 m³ Bucket, Cutting edge ISO type QC	○	○
COUNTERWEIGHT		
Counterweight	●	-
Counterweight - Heavy weight	○	●
Drawbar with pin	●	●
ACCESS		
Handrails (LH / RH) ergonomic located	●	●
Ladders (LH / RH) slip resistant	●	●
Platforms (LH / RH) slip resistant	●	●
Steps ergonomic located, slip resistant	●	●
GUARDS		
Transmission	○	○
Fenders (Front / Rear)	●	●
Mud Guard	●	●
Cabin glass (Front / Rear)	○	○

● : Standard
○ : Option
- : Not available

* Standard and optional equipment may vary. Contact your Hyundai dealer for more information. The machine may vary according to international standards.

* The photos may include attachments and optional equipment that are not available in your area.

* Materials and specifications are subject to change without advance notice.



Specifications and design are subject to change without notice. Pictures of Hyundai Construction Equipment Europe products may show other than standard equipment.

Hyundai Construction Equipment Europe nv,
Hyundailaan 4, 3980 Tessenderlo, Belgium.
Tel: (32) 14-56-2200 Fax: (32) 14-59-3405

HY-CE-00004 – 2021.8. Issue 1 en

Ready to experience the Hyundai Effect?

Contact your Hyundai dealer.
hyundai-ce.eu/en/dealer-locator

